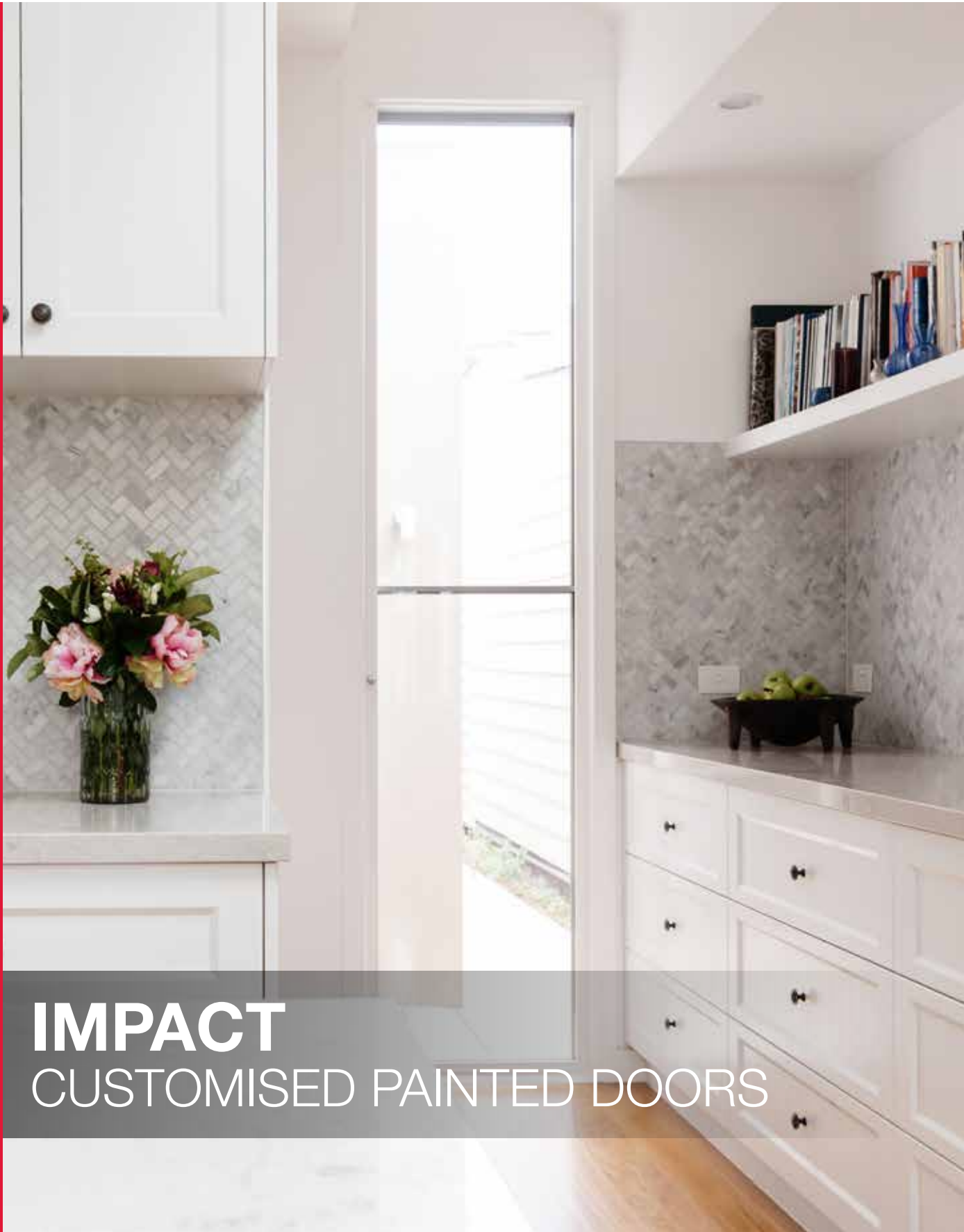


**Service<sup>+</sup>**  
Customised

**HÄFELE**



# IMPACT

## CUSTOMISED PAINTED DOORS

## IMPACT CUSTOMISED PAINTED DOORS

The Impact Customised Painted Door range offers a variety of choices and combinations to bring your kitchen to life. With a comprehensive range of door styles and colour options, this exciting new range encompasses designs and finishes which appeal to all.

Häfele are sure to have a door profile to suit your lifestyle and the colour choice is only limited by your imagination. Select from Shaker, flat panel, finger grip and traditional arch designs in the colour of your choice, with Satin or Gloss finish optional.

Partnering with one of Australia's leading manufacturers ensures the highest quality doors and service to complete your project, backed by a 7 Year Limited Warranty\* (Refer page 12).

Any sized kitchen or bathroom requirement or scale of project is possible, as we offer a flexible service for specific project requirements.

**Contact your local Häfele Account Manager for more details on the complete Impact Customised Painted door program.**



**Service<sup>+</sup>**  
Customised





**Avoca**



Bevel



**Avondale**



1mm Radius



**Aspley**



3mm Radius



**Brooklyn**



6mm Radius



**Burwood**



3mm Radius



**Byron**

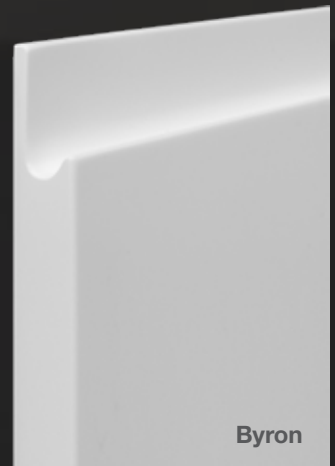


3mm Radius





Burwood



Byron

**Dover**



3mm Radius



**Dubbo**



3mm Radius



**Dorrigo**



3mm Radius



**Dudley**



3mm Radius



**Drysdale**



3mm Radius



**Dungog**



3mm Radius



**Dapto**



3mm Radius



**Balmain**



6mm Radius







**Ballina**



6mm Radius



**Bellevue**



Thumb Mould



**Cessnock**



3mm Radius



**Coogee**



3mm Radius







# ORDER FORM

Date ordered: 01/06/2023

Date required: 20/06/2023

Customer: Your Joinery

Order Number: 000111

Delivery Address: 123 Door Drive

Door Design: Balmain

Cardiff NSW 2285

Phone: (02) 5550 xxxx

Edge Profile: 3mm radius

Contact: John Jones

Door Colour: Dulux Lexicon White

Email: johnjones@hafele.com

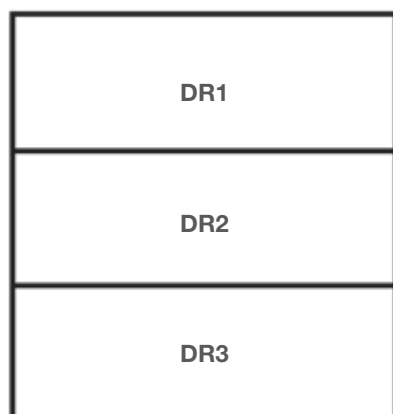
Finish: Gloss

| Door I Panel Instructions |     |             |            |              | Paint Instructions |   |   |   |                          |    |    |    |     |   |
|---------------------------|-----|-------------|------------|--------------|--------------------|---|---|---|--------------------------|----|----|----|-----|---|
| Line No.                  | Qty | Height (mm) | Width (mm) | Door / Panel | Edge Mould         |   |   |   | Returns (Standard 100mm) |    |    |    |     | Diagrams I Extra Paint Info<br>Eg: 1L = 1 Long Edge |
|                           |     |             |            |              | T                  | B | L | R | TR                       | BR | LR | RR | D/S |   |
| 1                         | 1   | 717         | 447        | Door         | X                  | X | X | X |                          |    |    |    |     |   |
| 2                         | 1   | 717         | 297        | Door         | X                  | X | X |   |                          |    |    |    |     |   |
| 3                         | 2   | 647         | 297        | Door         | X                  |   | X | X |                          |    |    |    |     |   |
| 4                         | 1   | 870         | 600        | Panel        |                    |   | X |   |                          |    |    |    |     |   |
| 5                         | 1   | 1,980       | 597        | Door         | X                  | X | X | X |                          |    |    |    |     |   |
| 6                         | 1   | 2,130       | 610        | Panel        |                    |   | X |   |                          |    |    |    |     |   |
| 7                         |     |             |            |              |                    |   |   |   |                          |    |    |    |     |   |
| 8                         |     |             |            |              |                    |   |   |   |                          |    |    |    |     |   |
| 9                         |     |             |            |              |                    |   |   |   |                          |    |    |    |     |   |
| 10                        |     |             |            |              |                    |   |   |   |                          |    |    |    |     |   |
| 11                        |     |             |            |              |                    |   |   |   |                          |    |    |    |     |   |
| 12                        |     |             |            |              |                    |   |   |   |                          |    |    |    |     |   |
| 13                        |     |             |            |              |                    |   |   |   |                          |    |    |    |     |   |
| 14                        |     |             |            |              |                    |   |   |   |                          |    |    |    |     |   |
| 15                        |     |             |            |              |                    |   |   |   |                          |    |    |    |     |   |
| 16                        |     |             |            |              |                    |   |   |   |                          |    |    |    |     |   |
| 17                        |     |             |            |              |                    |   |   |   |                          |    |    |    |     |   |
| 18                        |     |             |            |              |                    |   |   |   |                          |    |    |    |     |   |
| 19                        |     |             |            |              |                    |   |   |   |                          |    |    |    |     |   |
| 20                        |     |             |            |              |                    |   |   |   |                          |    |    |    |     |   |
| 21                        |     |             |            |              |                    |   |   |   |                          |    |    |    |     |   |
| 22                        |     |             |            |              |                    |   |   |   |                          |    |    |    |     |   |
| 23                        |     |             |            |              |                    |   |   |   |                          |    |    |    |     |   |
| 24                        |     |             |            |              |                    |   |   |   |                          |    |    |    |     |   |
| 25                        |     |             |            |              |                    |   |   |   |                          |    |    |    |     |   |

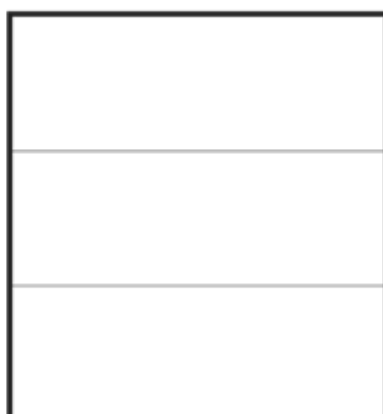
| Line No. | Qty | Overall Drawer Height (mm) | Width (mm) | Drawer Type (see reverse) | Edge Mould |   |   |   | Returns   |           |           |           |           |
|----------|-----|----------------------------|------------|---------------------------|------------|---|---|---|-----------|-----------|-----------|-----------|-----------|
|          |     |                            |            |                           | T          | B | L | R | DR1 (TOP) | DR2 (MID) | DR3 (MID) | DR4 (MID) | DR5 (BOT) |
| 26       | 2   | 717                        | 447        | Type 3                    | X          | X | X | X | 177       | 177       | 177       | 177       |           |
| 27       | 1   | 717                        | 597        | Type 3                    | X          | X | X | X | 237       | 237       | 237       |           |           |
| 28       | 1   | 717                        | 897        | Type 4                    |            |   |   |   | 237       | 237       | 237       |           |           |
| 29       |     |                            |            |                           |            |   |   |   |           |           |           |           |           |
| 30       |     |                            |            |                           |            |   |   |   |           |           |           |           |           |
| 31       |     |                            |            |                           |            |   |   |   |           |           |           |           |           |
| 32       |     |                            |            |                           |            |   |   |   |           |           |           |           |           |
| 33       |     |                            |            |                           |            |   |   |   |           |           |           |           |           |
| 34       |     |                            |            |                           |            |   |   |   |           |           |           |           |           |
| 35       |     |                            |            |                           |            |   |   |   |           |           |           |           |           |
| 36       |     |                            |            |                           |            |   |   |   |           |           |           |           |           |

## DRAWER BANK / PANTRY DOOR LINE DRAWINGS

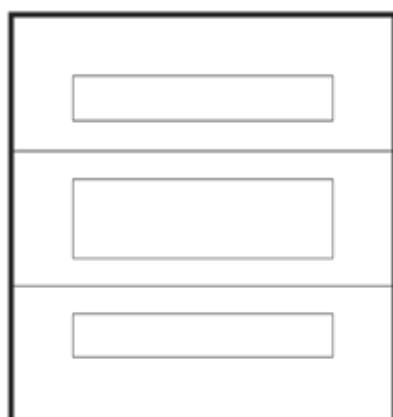
EP = Edge Profile



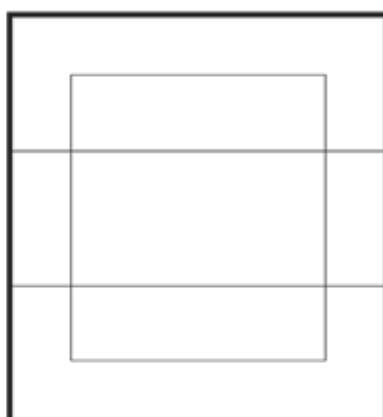
**TYPE 1**  
Drawer Individual, Flat doors  
(EP between drawers)



**TYPE 2**  
Drawer Bank, Flat doors  
(No EP between drawers)

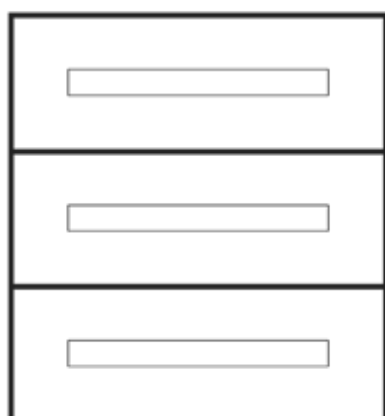


**TYPE 3**  
Drawer Individual, Face design  
(Half Rails, No EP between drawers)

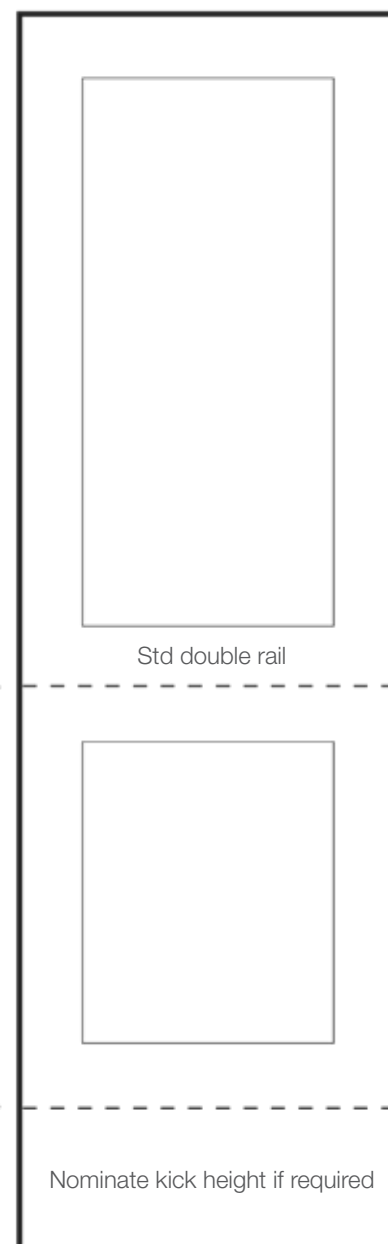


**TYPE 4**  
\*Drawer Bank, Face design  
(No EP between drawers)

\*Not available for  
Shaker profile doors.



**TYPE 5**  
Drawer Individual, Face design  
(STD Rails, EP between drawers)



- Please indicate drawer type required when ordering drawers on order form.
- Pantry doors must be ordered as a pantry door otherwise single profile will be supplied.
- All parts ordered as 'panel' will be manufactured with no face profile.

The information above indicates our standard drawer and pantry profiling. All parts ordered as panels are deemed to be flat panel and will not have any face profiling. Should you require an end panel with a face profile it must be ordered as a door.

## CARE AND MAINTENANCE

Painted doors are highly durable and a prestigious choice for kitchen and bathroom cabinetry. It not only looks great, it is exceptionally resistant to moisture and staining. When properly cared for, these surfaces can last for many years.

In order to ensure your new kitchen looks this great well into the future, please take note of the following recommendations while cleaning painted doors.

## RECOMMENDED CLEANERS

### Light cleaning

To enhance gloss and to remove finger marks and handprints, we recommend using a 3M high performance (non abrasive) cloth or similar microfibre cloth. This will maintain a chemical free, pristine finish.

### General cleaning

All but the most stubborn stains can be removed by using mild detergent, warm water and a lint free (preferably microfibre) cloth. If this method is insufficient, we recommend using a Spray & Wipe (or an equivalent product).

### Stubborn stains

Stains that are difficult to remove may be cleaned using Spray & Wipe or an equivalent cleaner. Under no circumstances should an abrasive cleaner (or abrasive cloth or scourer) be used on any painted surfaces.

## CAUTION!!!

### DO NOT use abrasive cleaners on any painted surfaces.

Abrasive cleaners will strip the surface of gloss and instantly deteriorate the finish. Whilst painted surfaces are generally resistant to solvents, we also recommend against using solvent-based products when cleaning.



## 7 YEAR LIMITED WARRANTY

Hafele Impact Customised Painted doors are covered by a seven (7) year limited warranty.

### Warranty coverage excludes:

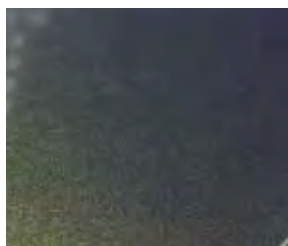
- Defect or damage caused by misuse, abuse or general wear and tear.
- Damage caused by other parties.
- Defect or damage caused by work or material supplied by others.

All warranty claims are subject to inspection to determine cause for claim.

Such inspection shall not be deemed in any way an admission of liability by Hafele Impact Customised Painted doors.

## ALUSION SPLASHBACKS

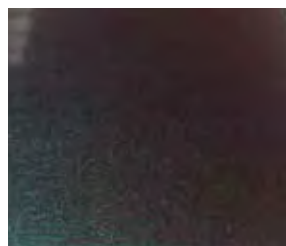
Aluminium composite splashbacks, a sleek and modern alternative to glass, acrylic and tiled splashbacks, Alusion is a versatile choice for those looking for an affordable yet durable kitchen splashback material. Its perfectly smooth surface in high gloss or matt finish and modern colour selection will make your kitchen stand out from the rest!



Sunset Illusion  
Gloss



Spectra Copper  
Gloss



Spectra Purple  
Gloss



Nano Flash Silver  
Gloss



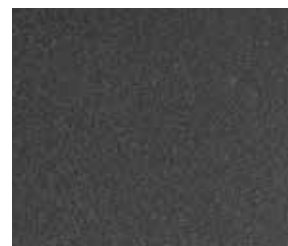
Dark Grey  
Matt



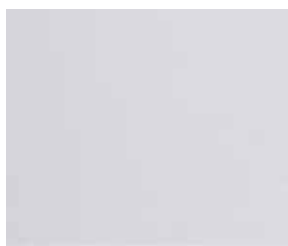
Champagne Silver  
Matt



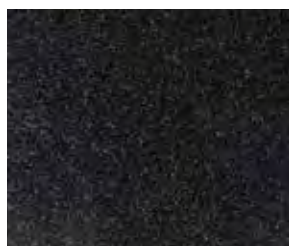
Silver Grey  
Matt



Dark Grey Silver  
Matt



Pearl White  
Gloss



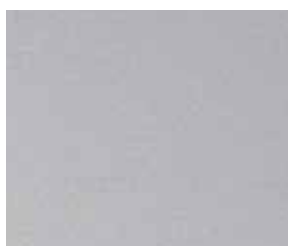
Pearl Black  
Gloss



Flash Silver  
Matt



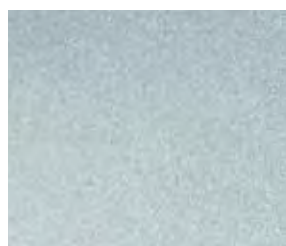
Champagne  
Matt



Nano White Silver  
Gloss



Nano Champagne Silver  
Gloss



Flash Green  
Matt



Metallic Blue  
Matt



# IMPACT BENCHTOPS

Customised Benchtops Solutions Dispatched in 48 hours

## DEKTON LITE™



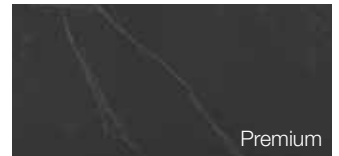
Kreta



Sirius

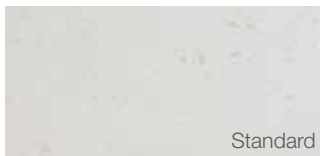


Lunar

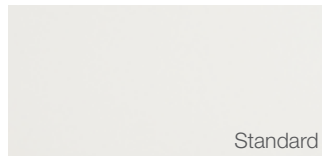


Kelya

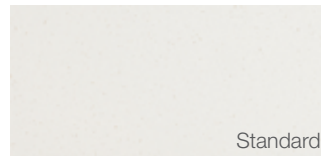
## MIROSTONE®



Capri



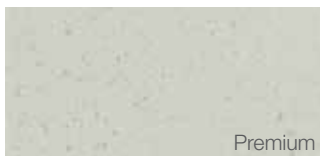
Aspen White



Iconic Sand



Alpine



Ash Fall



Warm Grey



Diamond White

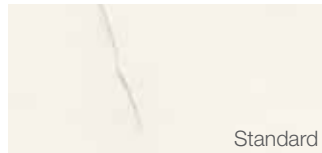


Bianco Marble

## DUROPAL® QUADRA LAMINATE



Pale Lancelot - **FG**



India White - **SD**



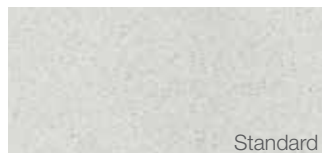
Cararra Marble - **MS**



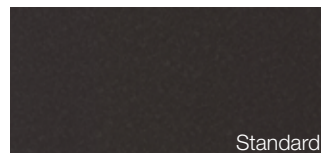
Centro - **SD**



Bellato Gray - **SD**



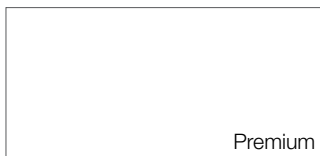
Quartz Stone - **VO**



Black Brazil - **VO**



Oiled Oak - **NY**



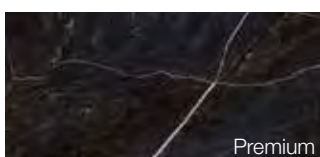
Icy White - **XM**



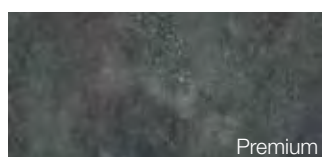
Volcanic Black - **XM**

**FG** - Fine Grain  
**XM** - Xtreme Matt  
**MS** - Enhanced Semi Matt  
**SD** - Sand Pearl  
**VO** - Volcano  
**NY** - Natural Wood

## COMPACT LAMINATE



Centoni Firestone Marble



Centoni Dark Concrete



Centoni Versilia Marble



Centoni Light Concrete



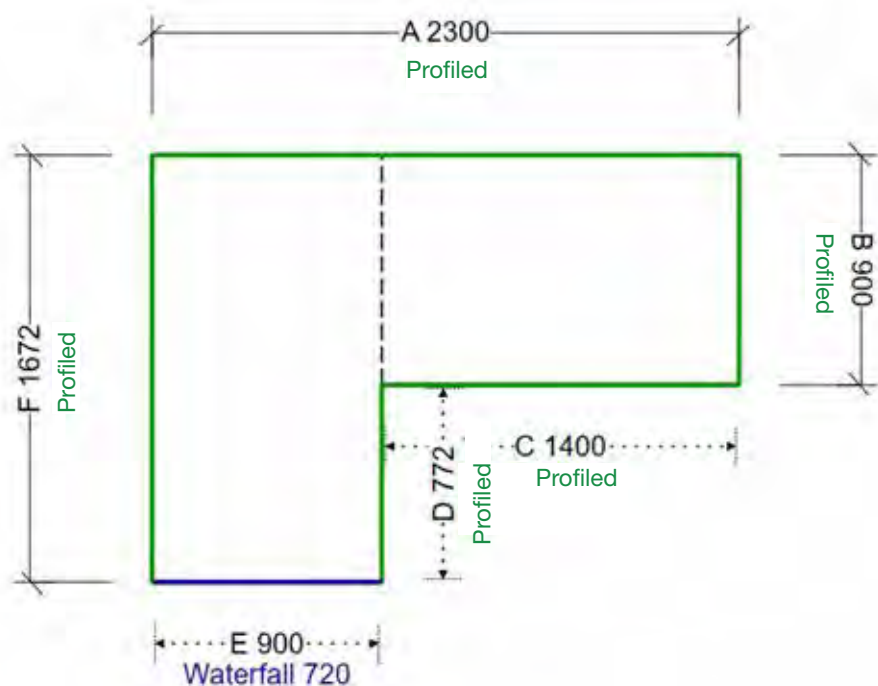
## HOW TO QUOTE & ORDER DETAILS

For 24/7 quoting and ordering, simply log in at [www.impactbenchtops.hafele.com.au](http://www.impactbenchtops.hafele.com.au) to quote and order your customised benchtops.



After selecting your benchtop type, entering customer name and job reference details, you can design your customised benchtop including any cut-outs required for sinks and cooktops.

Mirostone (20mm)  
Ash Fall  
Standard - STD



Once your design is completed simply click “Quote” to obtain your price.  
Happy with your quote? Convert your quote to an order in seconds for guaranteed 48 hour dispatch.

Not registered for Impact Benchtops?  
Go to [www.hafele.com.au](http://www.hafele.com.au) > **Service** > **Configuration tools** > **register**



Impact Customised Painted Doors - 09.2023

**Häfele Australia Pty. Ltd.** | 8 Monterey Road | Dandenong | Victoria 3175  
**Phone:** 1300 659 728 | **Fax:** (03) 9212 2001 | **Email:** info@hafele.com.au | [www.hafele.com.au](http://www.hafele.com.au)

**Häfele New Zealand Ltd.** | 16 Accent Drive | East Tamaki | Auckland 2013  
**Phone:** 0800 442 335 | **Email:** info@hafele.co.nz | [www.hafele.co.nz](http://www.hafele.co.nz)

**HÄFELE LOCATIONS:**

**Australia** | MELBOURNE | SYDNEY | NEWCASTLE | BRISBANE | ADELAIDE | LAUNCESTON | HOBART | PERTH  
**New Zealand** | AUCKLAND | WELLINGTON | CHRISTCHURCH

