



LEVER HANDLES
DESIGNER SERIES COLLECTION



WELCOME TO STARTEC.

Functional and reliable architectural hardware is essential for the efficient function of buildings of all types, from office buildings to hotels, residential developments to hospitals and aged care facilities. Design also plays a major role in the aesthetic of such buildings, from what we see externally all the way through to the smaller, intricate details of the internal finishes.

All around the world, Häfele seeks to take innovation, reliability and quality to a new level for all types of architectural hardware, including products like our StarTec lever handle range. Since the launch of our StarTec Designer Series lever handle range in 2019, Häfele has been chosen as a key supplier for many landmark buildings across Australia, proving that architects, interior designers, developers and builders are pleased to align themselves with a trusted brand like Häfele.

In order to keep up with the ever-changing trends and styles within a building, we are excited to introduce an extension to our existing assortment of lever handle designs and finishes to complement our StarTec series, six new lever designs in five new and exciting finishes, all of which will now form our "Designer" series collection.

This collection is complemented by matching escutcheons, door stops, door pulls, hinges and door closers, all of which ensure the aesthetic and finish within the building, flow impeccably. Our dedicated team and proven 360 degree project solutions service are there to assist you in every step of the way, ensuring from planning stages through to completion and handover of your project is as seamless as possible.

It is our goal to remain an invaluable partner and inspire architects, interior designers, developers and builders with our comprehensive knowledge of hardware fittings. Further to this, the "Designer" series collection by Häfele is supported by a comprehensive 10-year warranty, which confirms our trust in the quality and function of this exciting product offer.

Thank you for your continued support and we look forward to working with you on your next project.

Yours sincerely,

Simon Clark
Head of Sales – Projects

360° COMPREHENSIVE PROJECT SOLUTIONS.

PLANNING SERVICES

We understand the importance of accuracy, attention to detail and absolute functionality. The Projects team can help with legislative and operational requirements to ensure your project meets building and fire safety standards and regulations, as well as providing strategy for fire and security access control.

PRODUCT SPECIFICATION SERVICES

Häfele have a number of market-led architectural ironmongery solutions available in stock. The combination of a global supplier network and the knowledge of the Projects team, means they are perfectly placed to support in the specification of the product you need, whatever the size of project, design or sector.

TENDERING & QUOTATION SERVICES

As part of the planning phase, here at Häfele we will provide honest, helpful and expert advice. Our team can offer product, manufacturer specific or independent advice as and when required, meaning the Häfele Projects team is a one-stop shop for all your architectural hardware planning needs.

IMPLEMENTATION SERVICES

The Häfele Projects team can help ensure that your project runs smoothly throughout implementation with secure and reliable delivery from our international network. This means that we can ensure the safe arrival of products on site as and when they are needed and can offer bespoke logistics such as phased deliveries or door packed consignments.

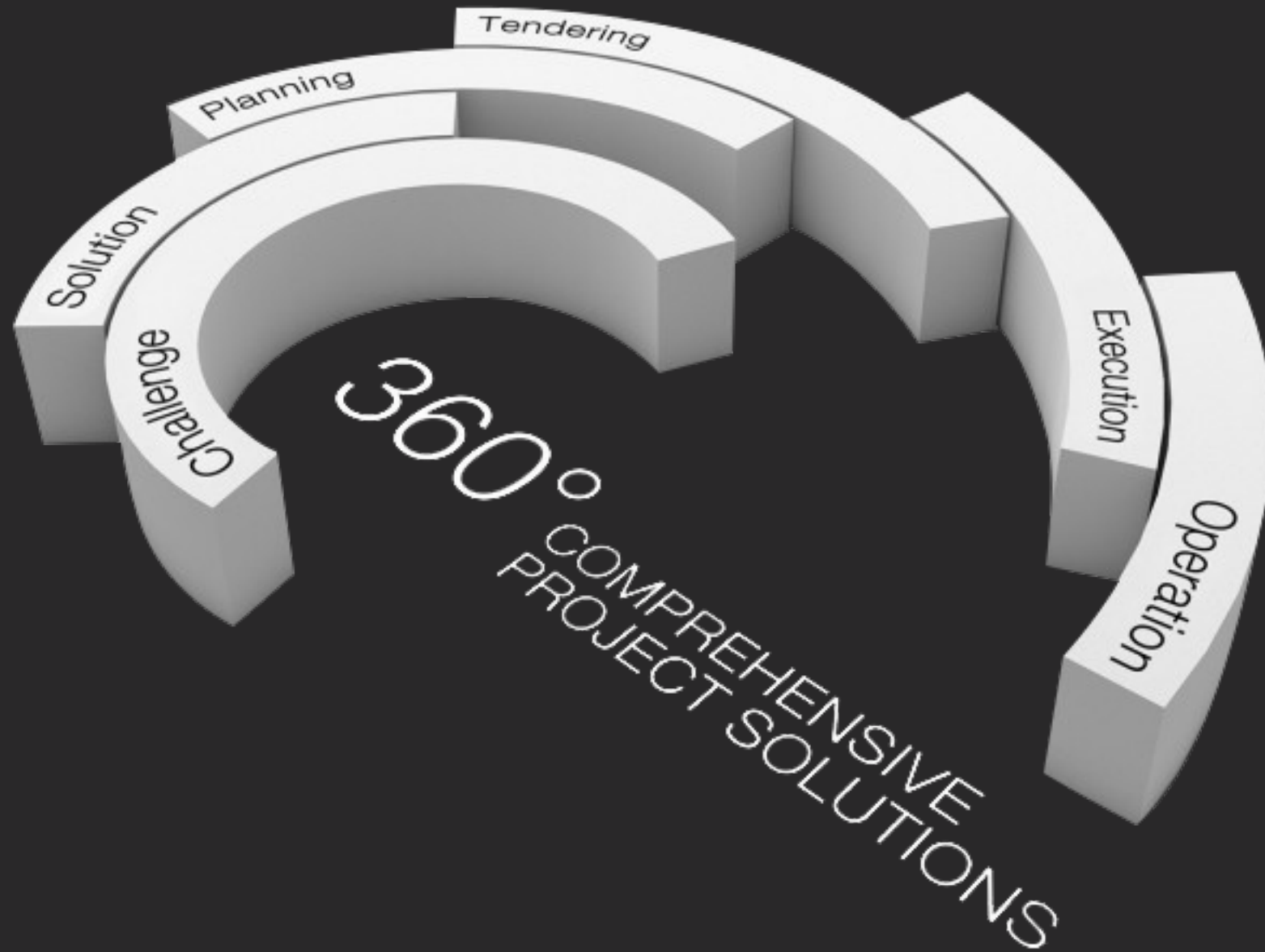
DOOR BY DOOR SCHEDULING

Using our industry standard door scheduling software, the projects team can create accurate and detailed door-by-door schedules for projects of any shape and size.

This document can be tailored to your requirements to include product imagery and pricing information, grouping similar products in hardware sets.

APPROVED CPD PRESENTATIONS

The Häfele Project team are able to offer formal CPD presentations, delivered either face to face or remotely. Specifying architectural hardware and associated products for inclusive design will help you understand the various standards relating to accessible housing and the Specialist Disability Accommodation standard. Our CPD will reward the participant with one formal CPD point.



MATERIALS & CHARACTERISTICS.



SSS - SATIN STAINLESS STEEL

This contemporary material is excellent for lever designs pairing well with a large range of surfaces. Its finish is corrosion resistant and is resistant to impact and scratch marks.



PSS - POLISHED STAINLESS STEEL

For a lustrous finish our satin stainless steel levers are polished to give the lever its beautiful and bright appearance, with the additional benefits of being hard wearing and resistant to abrasion.



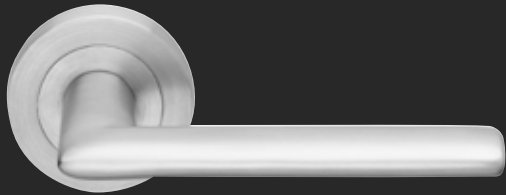
SB - SATIN BRASS

PVD - (Physical Vapour Deposition) A hard material coating is vapour deposited onto stainless steel in a vacuum chamber to create this finish. This coating is characterised by its corrosion and oxidation resistance and permanently retaining its colour.



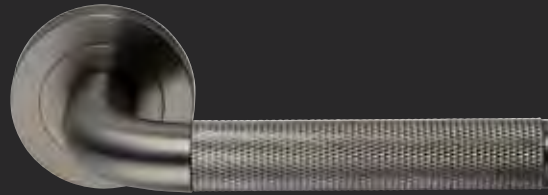
GB - GRAPHITE BLACK

PVD - (Physical Vapour Deposition) A hard material coating is vapour deposited onto stainless steel in a vacuum chamber to create this finish. This coating is characterised by its corrosion and oxidation resistance and permanently retaining its colour.



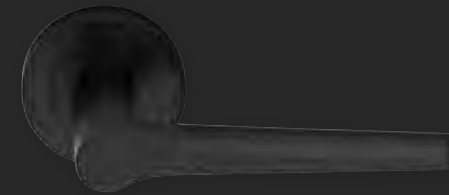
SN - SATIN NICKEL

A very popular European finish offering a rich effect with visible satin lines and warm hues that beautifully complement other architectural hardware finished in Satin Stainless Steel. Satin Nickel is especially suited to modern, contemporary environments with a sharp emphasis on the design aesthetic.



VGM - GUNMETAL

Dark and strong with a satin-smooth texture, gunmetal fuses slate and graphite undertones in a contemporary, hard-wearing PVD finish.



VBS - PVD BLACK SATIN

Dark and strong with a satin-smooth texture, PVD Black Satin fuses slate and graphite undertones in a contemporary hard-wearing finish. Modern, bold and understated, this finish lends itself well to projects ranging from mid-century to the ultra-modern. Clean, smooth and suggestive of satin, PVD Black Satin is a tactile, highly touchable surface that is very hard-wearing.



VBB - BRUSHED BRASS

Our brushed brass PVD finish exudes timeless allure, showcasing the raw elegance of brass while safeguarding against tarnishing through its durable PVD coating.



VWB - WEATHERED BRONZE

Elegantly and warm, our weathered bronze PVD finish envelops the surfaces with a luxurious deep bronze, infusing richness and depth, ensuring lasting beauty.

TORQUAY.

StarTec

The Torquay lever handle is elegantly tapered for a refined aesthetic. Clean lines and fine detailing are the essence of this lever, it pairs well with many finishes, making this handle a popular choice for any project.



SSS



PSS



SB



GB



1. H2345

Antique brass plated, brushed
168 x 29 mm
106.70.681

2. H2345

Antique brass plated, brushed
136 x 29 mm
106.70.680

3. H2345

Polished chrome plated
168 x 29 mm
106.70.671

4. H2345

Polished chrome plated
136 x 29 mm
106.70.670

5. Torquay Lever

Graphite black
127 x 54 mm (L x D)
904.21.323

6. Torquay Lever

Satin brass
127 x 54 mm (L x D)
904.21.325

7. Torquay lever

Satin stainless steel
127 x 54 mm (L x D)
904.21.320

8. H1330

Nickel plated brushed
204 x 34 mm
106.69.677

9. H1330

Nickel plated brushed
172 x 34 mm
106.69.676

COOGEE.

StarTec

The Coogee lever is bold and powerful in appearance, softening the robust style of this handle are subtly curved edges and a thin handle profile.



SSS



PSS



SB



GB



1. H2350

Nickel plated brushed
244 x 31 mm
106.70.571

2. H2350

Gold coloured brushed
244 x 31 mm
106.70.581

3. H2350

Matt black
180 x 31 mm
106.70.560

4. H2355

Gold coloured brushed
52 x 31 mm
106.70.592

5. Oval escutcheon

Satin stainless steel
Ø50 mm
905.59.010

6. Coogee lever

Graphite black
125 x 48 mm (L x D)
904.21.343

7. H2380

Graphite coloured
232 x 28 mm
106.70.303

8. H2380

Nickel plated brushed
200 x 28 mm
106.70.282

9. H2380

Matt black
168 x 28 mm
106.70.282

10. H2380

Gold coloured brushed
200 x 28 mm
106.70.292

11. H2385

Gold coloured brushed
27 x 28 mm
106.70.312

GLENELG.

StarTec

The Glenelg is hollow and light, suitable for many door types. Its minimalist look pairs well with all of the StarTec finishes.



SSS



PSS



SB



GB



1. H2335

Nickel plated brushed
47 x 32 mm
106.70.471

2. H2335

Graphite coloured
47 x 32 mm
106.70.473

3. H2330

Matt black
114 x 32 mm
106.70.430

4. H2330

Gold coloured brushed
146 x 32 mm
106.70.451

5. H2330

Graphite coloured
178 x 32 mm
106.70.462

6. Thumbturn

Graphite black
Ø50 mm
903.58.148

7. Glenelg lever

Satin brass
135 x 72 mm (L x D)
904.21.295

8. Glenelg lever

Polished stainless steel
135 x 72 mm (L x D)
904.21.291

9. H2370

Polished chrome plated
140 x 30 mm
106.70.541

10. H2370

Matt black
108 x 30 mm
106.70.520

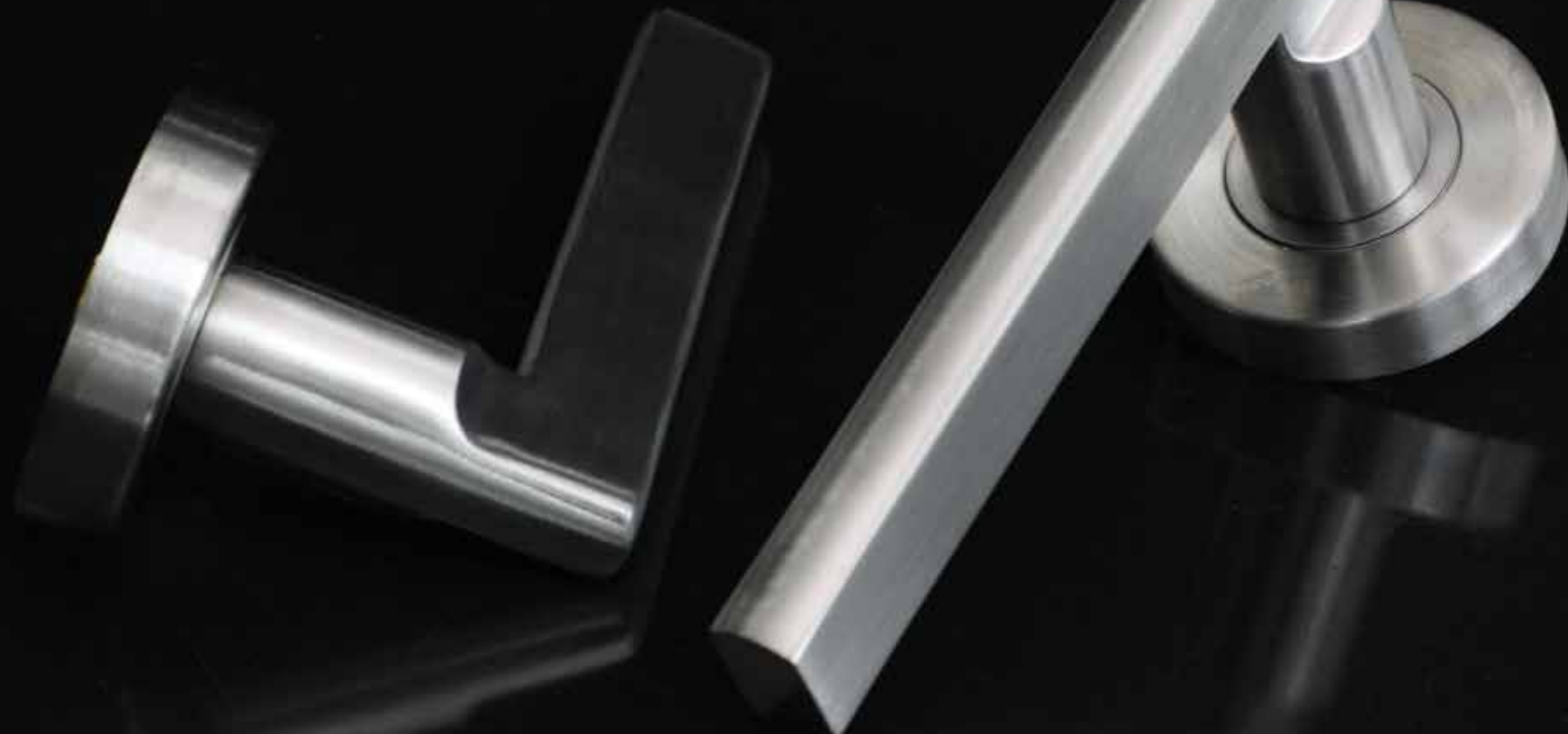
11. H2130

Nickel plated brushed
34 x 29 mm
106.69.150

BRONTE.

StarTec

With its unique stem this lever style is a contemporary update on a minimalist style. This handle features a subtle radius to its edges adding a luxurious element to a bold handle.



SSS



PSS



SB



GB



1. H2340

Titanium coloured matt grey
172 x 30 mm
106.70.641

2. H2340

Nickel plated brushed
140 x 30 mm
106.70.650

3. H1735

Antique brass plated
139 x 28 mm
106.62.525

4. H1735

Used look brushed black
171 x 28 mm
106.62.426

5. H1735

Nickel plated brushed
139 x 28 mm
106.62.625

6. H1735

Chrome plated polished
139 x 28 mm
106.62.225

7. DDA thumbturn

Satin stainless steel
Ø57 mm
905.59.012

8. Bronte lever

Satin stainless steel
129 x 65 mm (L x D)
904.21.310

9. H2340

Titanium coloured matt grey
140 x 30 mm
106.70.640

NOOSA.

StarTec

Taken from its namesake the Noosa lever has drawn inspiration from nature, modelled around the curve of a wave this handle is not only appealing it is comfort by design.



SSS



PSS



SB



GB



1. Urban

Titanium coloured matt grey
170 x 30 mm
110.29.556

2. Urban

Nickel plated brushed
170 x 30 mm
110.29.656

3. Urban

Nickel plated brushed
202 x 30 mm
110.29.057

4. Urban

Titanium coloured satin
202 x 30 mm
110.29.557

5. Urban

Matt black
330 x 30 mm
110.29.358

6. H2395

Matt black
180 x 30 mm
106.70.611

7. H2395

Dark pewter coloured
180 x 30 mm
106.70.631

8. H2395

Dark pewter coloured
148 x 30 mm
106.70.630

9. H2395

Nickel plated brushed
148 x 30 mm
106.70.620

10. Noosa lever

Satin stainless steel
121 x 54 mm (L x D)
904.21.350

SEACLIFF.

StarTec

Visually reminiscent of a bygone era, this lever design is playful yet refined with its curved form. This handle also features a contoured back for added comfort.



SSS



PSS



SB



GB



1. H2320

Matt black
214 x 29 mm
106.70.323

2. H2320

Titanium coloured matt grey
214 x 29 mm
106.70.363

3. H2320

Gold coloured brushed
214 x 29 mm
106.70.343

4. H2320

Nickel plated brushed
214 x 29 mm
106.70.333

5. H2320

Graphite coloured
214 x 29 mm
106.70.353

6. H2320

Matt black
118 x 29 mm
106.70.320

7. H2325

Matt black
24 x 29 mm
106.70.370

8. H2325

Gold coloured brushed
24 x 29 mm
106.70.372

9. H2325

Nickel plated brushed
24 x 29 mm
106.70.371

10. Thumbturn

Graphite black
Ø50 mm
903.58.148

11. Luxe

Matt black
75 x 38 mm
100.45.203

12. Luxe

Brass brushed
75 x 38 mm
100.45.202

13. Luxe

Nickel plated brushed
75 x 38 mm
100.45.200

14. Luxe

Matt white
75 x 38 mm
100.45.207

15. Seacliff lever

Satin stainless steel
120 x 65 mm (L x D)
904.21.330

16. Seacliff lever

Satin brass
120 x 65 mm (L x D)
904.21.335

PREVELLY.

StarTec

This classic lever style comes to life when paired with one of our StarTec designer finishes. Its relatively subtle form blends cohesively with many applications.



SSS



PSS



SB



GB



1. H1715
 Matt black
 176 x 28 mm
 110.62.116

2. H1715
 Brushed brass plated
 176 x 28 mm
 110.62.116

3. H1715
 Anique pewter
 176 x 28 mm
 110.62.916

4. H1715
 Polished copper plated
 176 x 28 mm
 110.62.016

5. H1715
 Matt white
 176 x 28 mm
 106.62.716

6. Indicating EM release
 Satin stainless steel
 Ø50 mm
 905.59.014

7. Blank rose
 Satin stainless steel
 Ø50 mm
 905.59.009

8. Prevelly lever
 Polished stainless steel
 120 x 62 mm (L x D)
 904.21.281

9. Prevelly lever
 Satin brass
 120 x 62 mm (L x D)
 904.21.285

ESCUTCHEONS.

StarTec



SSS



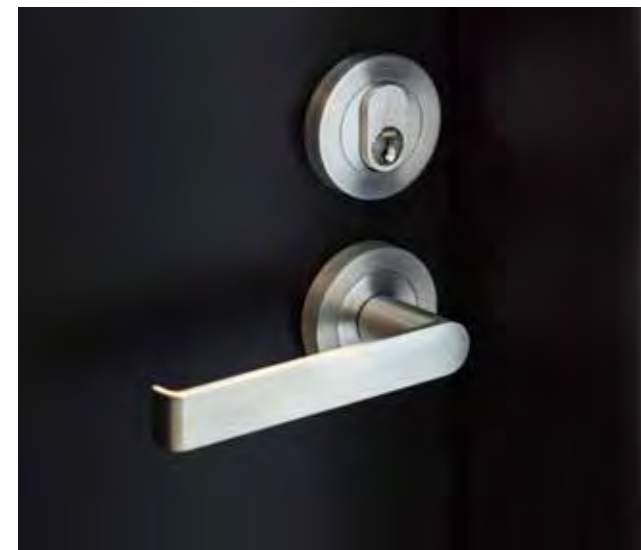
PSS



SB



GB



BURWOOD BRICKWORKS

Oval Cylinder

Satin stainless steel
905.59.010

Graphite black
903.58.147

Polished stainless steel
903.58.167

Satin brass
903.58.135

Emergency Release

Satin stainless steel
905.59.013

Graphite black
903.58.150

Polished stainless steel
903.58.170

Satin brass
903.58.138

Blank rose

Satin stainless steel
905.59.009

Graphite black
903.58.146

Polished stainless steel
903.58.174

Satin brass
903.58.134

Thumbturn

Satin stainless steel
905.59.011

Graphite black
903.58.148

Polished stainless steel
903.58.168

Satin brass
903.58.136

DDA thumbturn

Satin stainless steel
905.59.012

Graphite black
903.58.149

Polished stainless steel
903.58.169

Satin brass
903.58.137

Indicating EM release

Satin stainless steel
905.59.014

Graphite black
903.58.151

Polished stainless steel
903.58.171

Satin brass
903.58.139

Additional handle finishes and sizes are available.

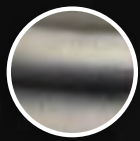
GABRIELLA.



Minimal, sleek and aerodynamic in style, the Gabriella lever door handle on a round rose offers a minimalist look with a distinctive look.



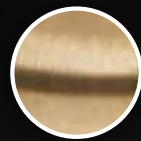
SN



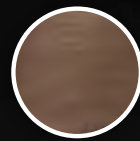
VGM



VBS



VBB



VWB



1. H2360

Gold coloured brushed
252 x 27 mm
106.70.501

2. H2360

Matt black
252 x 27 mm
106.70.481

3. H2360

Nickel plated brushed
252 x 27 mm
106.70.491

4. H2360

Nickel plated brushed
188 x 27 mm
106.70.490

5. H2360

Matt black
188 x 27 mm
106.70.480

6. H2360

Gold coloured brushed
188 x 27 mm
106.70.500

7. H2365

Nickel plated brushed
60 x 27 mm
106.70.511

8. H2365

Matt black
60 x 27 mm
106.70.510

9. H2365

Gold coloured brushed
60 x 27 mm
106.70.512

10. Gabriella lever

Satin nickel
107 x 60 mm (L x D)
900.22.996

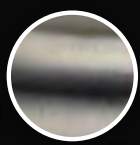
LANEX.



Inspired by the Bauhaus era, the Lanex lever door handle blends basic shapes with a distinctive trend, resulting in a decorative door handle that is stunning and stylish. Mounted on a rounded backplate which suits a variety of decorative design settings.



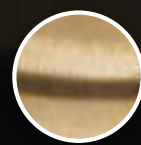
SN



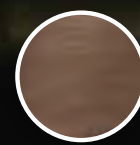
VGM



VBS



VBB



VWB



1. H2390

Gold coloured brushed
137 x 31 mm
106.70.602

2. H2390

Nickel plated brushed
137 x 31 mm
106.70.601

3. H2390

Polished chrome plated
137 x 31 mm
106.70.600

4. H2150

Gold coloured brushed
56 x 50 mm
106.70.136

5. H2150

Nickel plated brushed
56 x 50 mm
106.70.135

6. DDA thumbturn

Brushed brass
Ø53 mm
901.59.620

7. Indicating EM release

Weathered bronze
Ø53 mm
901.59.653

8. Lanex lever

Weathered bronze
112 x 62 mm (L x D)
900.22.981

9. Lanex lever

PVD Black satin
112 x 62 mm (L x D)
900.22.983

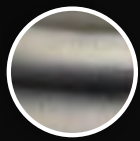
CATALINA.



An elegant, modern and clean-cut design, the Catalina lever door handle mounted on a round backplate provides a distinguishing, aesthetic comfort with its soft lines.



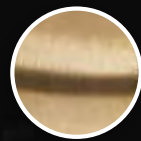
SN



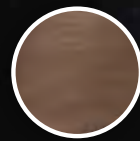
VGM



VBS



VBB



VWB



1. H1510

Nickel plated brushed
340 x 30 mm
106.61.017

2. H1510

Nickel plated brushed
212 x 30 mm
106.61.014

3. H1510

Polished chrome plated
340 x 30 mm
106.61.217

4. H1510

Polished chrome plated
212 x 30 mm
106.61.214

5. Outer cover rose

Satin nickel
53 x 53 mm
901.59.603

6. Thumbturn

Satin nickel
Ø53 mm
901.59.589

7. H1565

Oil rubbed bronze
176 x 32 mm
106.61.124

8. H1565

Nickel plated brushed black
176 x 32 mm
106.61.324

9. Catalina lever

Brushed brass
108 x 62 mm (L x D)
900.22.975

KAMEN FLINDERS.



With masculine yet sophisticated proportions, the Kamen Flinders demonstrates that versatile elegance doesn't always need to be soft. Fusing an industrial aesthetic with the perception of delicate craftsmanship, the Kamen lever was inspired by the increasing popularity of high-end residential warehouse conversions. Shown here on a round rose, the Kamen Flinders adds a textured and refined touch to any interior.



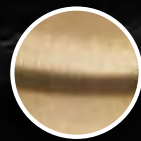
SN



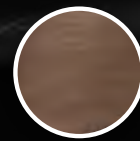
VGM



VBS



VBB



VWB



1. H2305

Matt black
172 x 32 mm
106.70.382

2. H2305

Gold coloured brushed
172 x 32 mm
106.70.402

3. H2305

Nickel plated brushed
172 x 32 mm
106.70.392

4. H2305

Nickel plated brushed
204 x 32 mm
106.70.393

5. H2305

Gold coloured brushed
204 x 32 mm
106.70.403

6. H2305

Matt black
204 x 32 mm
106.70.383

7. Karmen flinders

Satin nickel
148 x 62 mm
900.23.006

8. Karmen flinders

PVD Black satin
148 x 62 mm
900.23.003

9. Knurled Thumbturn

Satin nickel
53 x 53 mm
901.59.591

10. H2310

Matt black
50 x 30 mm
106.70.410

11. H2315

Brushed gold coloured
80 x 25 mm
106.70.422

12. H2315

Nickel plated brushed
80 x 25 mm
106.70.421

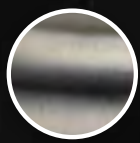
QUAD.



Cutting-edge with its sleek, square lines and confident appearance, the Quad lever door handle on square backplate gives a stunning, modern feature to your doors.



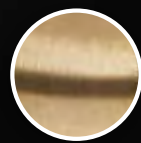
SN



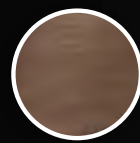
VGM



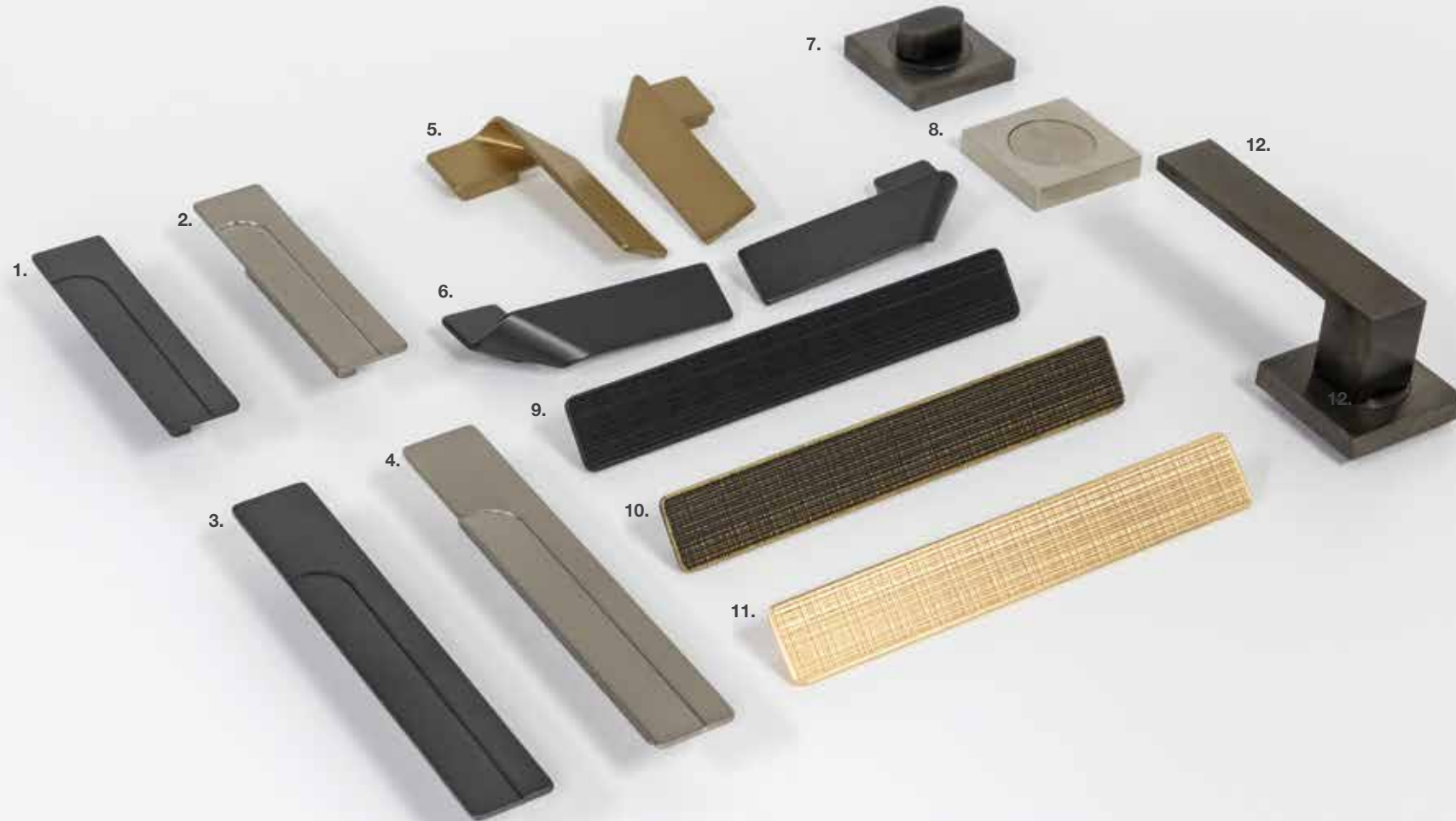
VBS



VBB



VWB



1. H2195

Slate grey coloured
124 x 23 mm
106.70.260

2. H2195

Nickel plated brushed
124 x 23 mm
106.70.250

3. H2195

Slate grey coloured
173 x 23 mm
106.70.261

4. H2195

Nickel plated brushed
173 x 23 mm
106.70.251

5. H2155

Gold coloured brushed
100 x 23 mm 101.69.504 RH
100 x 23 mm 101.69.505 LH

6. H2155

Dark pewter coloured
100 x 23 mm 101.69.506 RH
100 x 23 mm 101.69.507 LH

7. Thumbturn

Gunmetal
53 x 53 mm
901.59.642

8. Blank rose

Satin nickel
53 x 53 mm
901.59.601

9. H1910

Matt black
190 x 19 mm
106.70.003

10. H1910

Antique brass plated
190 x 19 mm
106.70.006

11. H1910

Polished brass plated
190 x 19 mm
106.70.005

12. Quad lever

Gunmetal
110 x 47 mm
900.23.018

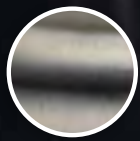
LODDEN.



Simple, minimal and streamlined, the Lodden cylindrical door handle on a round backplate offers a classic style to any door.



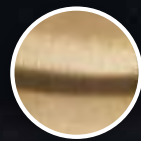
SN



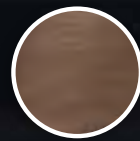
VGM



VBS



VBB



VWB



1. H1950
 Matt black
 108 x 26 mm
 106.69.440

2. H1950
 Nickel plated brushed
 172 x 26 mm
 106.69.432

3. H1950
 Matt black
 204 x 26 mm
 106.69.443

4. H1950
 Nickel plated brushed
 140 x 26 mm
 106.69.431

5. Lodden lever
 PVD Black satin
 119 x 56 mm
 900.23.053

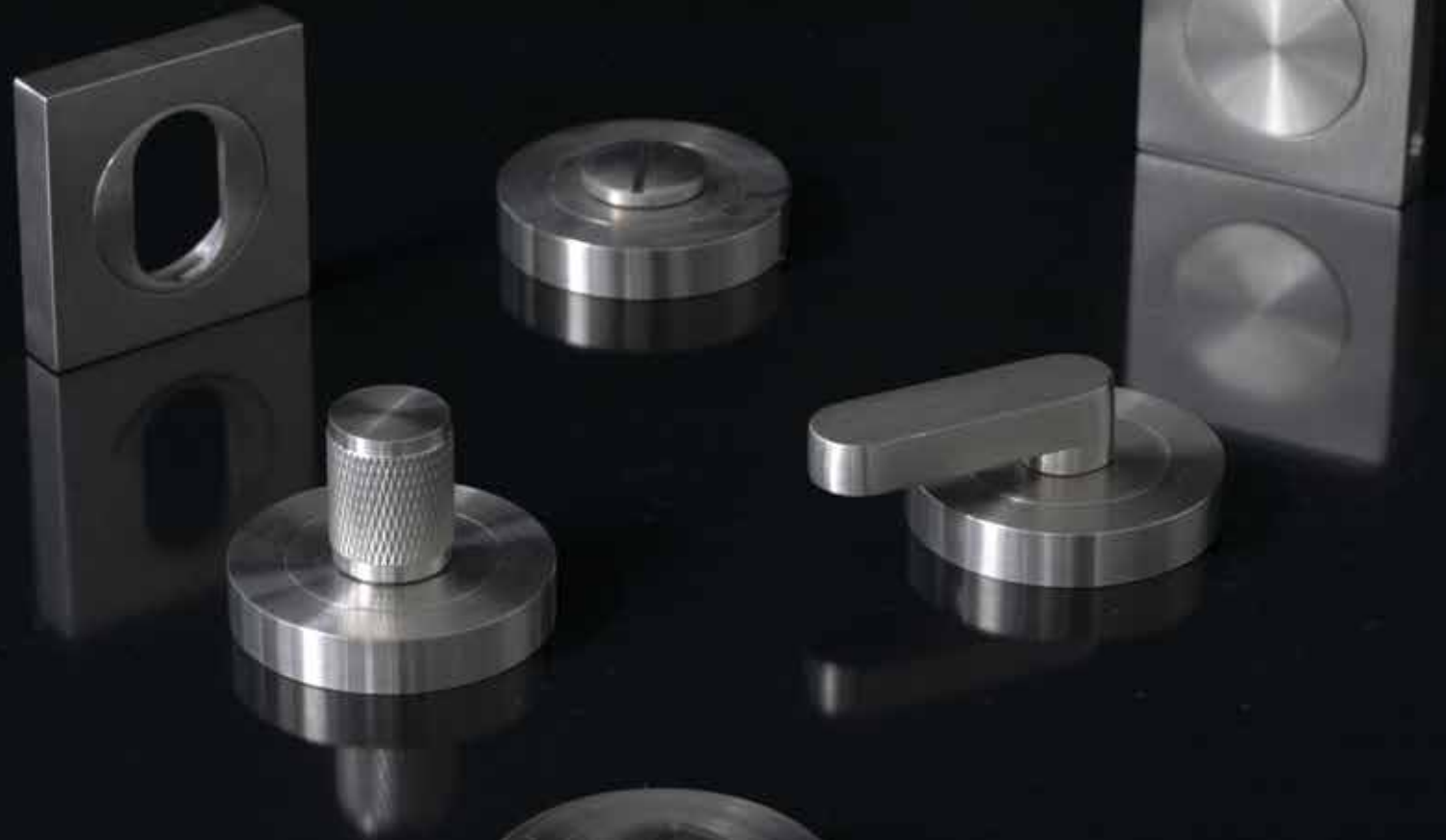
6. Lodden lever
 Satin nickel
 119 x 56 mm
 900.23.056

7. H1925
 Matt black
 176 x 36 mm
 106.69.404

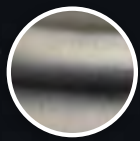
8. H1925
 Brushed brass plated
 176 x 36 mm
 106.69.402

9. H1925
 Antique brass plated
 176 x 36 mm
 106.69.403

ESCUTCHEONS.



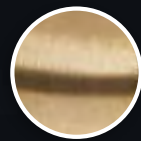
SN



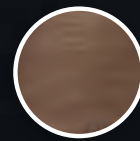
VGM



VBS



VBB



VWB

ROUND ESCUTCHEONS

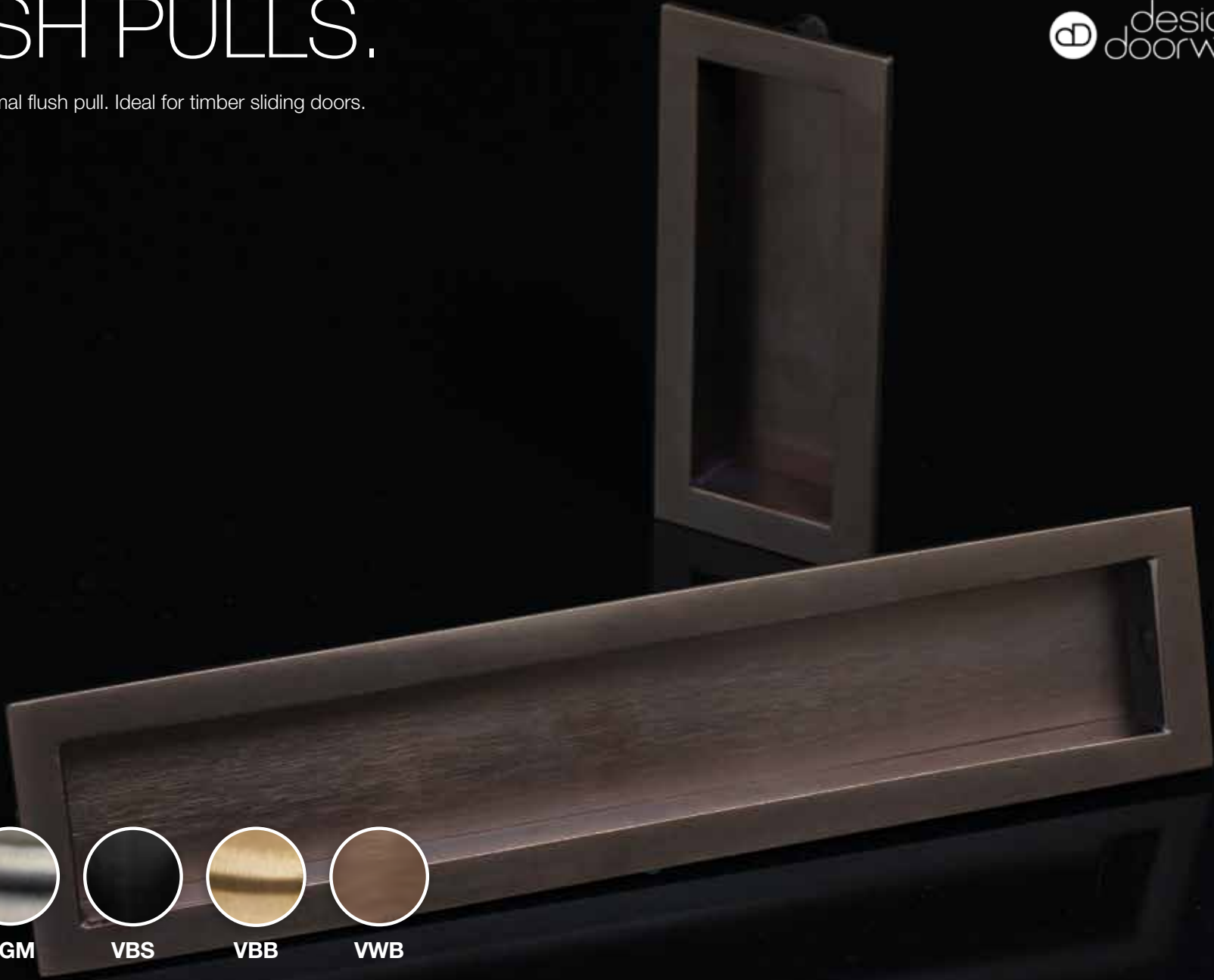
Oval Cylinder	Emergency Release	Blank rose	Thumbturn	DDA thumbturn	Indicating EM release	Outer cover	Knurled thumbturn
Satin nickel 901.59.595	Satin nickel 901.59.592	Satin nickel 901.59.594	Satin nickel 901.59.589	Satin nickel 901.59.590	Satin nickel 901.59.593	Satin nickel 901.59.596	Satin nickel 901.59.591
Gunmetal 901.59.640	Gunmetal 901.59.637	Gunmetal 901.59.639	Gunmetal 901.59.634	Gunmetal 901.59.635	Gunmetal 901.59.638	Gunmetal 901.59.641	Gunmetal 901.59.636
Black satin 901.59.610	Black satin 901.59.607	Black satin 901.59.609	Black satin 901.59.604	Black satin 901.59.605	Black satin 901.59.608	Black satin 901.59.611	Black satin 901.59.606
Brushed brass 901.59.625	Brushed brass 901.59.622	Brushed brass 901.59.624	Brushed brass 901.59.619	Brushed brass 901.59.620	Brushed brass 901.59.623	Brushed brass 901.59.626	Brushed brass 901.59.621
Weathered bronze 901.59.655	Weathered bronze 901.59.652	Weathered bronze 901.59.654	Weathered bronze 901.59.649	Weathered bronze 901.59.650	Weathered bronze 901.59.653	Weathered bronze 901.59.656	Weathered bronze 901.59.651

SQUARE ESCUTCHEONS

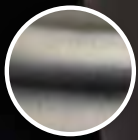
Oval Cylinder	Emergency Release	Blank rose	Thumbturn	DDA thumbturn	Indicating EM release	Outer cover
Satin nickel 901.59.602	Satin nickel 901.59.599	Satin nickel 901.59.601	Satin nickel 901.59.597	Satin nickel 901.59.598	Satin nickel 901.59.600	Satin nickel 901.59.603
Gunmetal 901.59.647	Gunmetal 901.59.644	Gunmetal 901.59.646	Gunmetal 901.59.642	Gunmetal 901.59.643	Gunmetal 901.59.645	Gunmetal 901.59.648
Black satin 901.59.617	Black satin 901.59.614	Black satin 901.59.616	Black satin 901.59.612	Black satin 901.59.613	Black satin 901.59.615	Black satin 901.59.618
Brushed brass 901.59.632	Brushed brass 901.59.629	Brushed brass 901.59.631	Brushed brass 901.59.627	Brushed brass 901.59.628	Brushed brass 901.59.630	Brushed brass 901.59.633
Weathered bronze 901.59.662	Weathered bronze 901.59.659	Weathered bronze 901.59.661	Weathered bronze 901.59.657	Weathered bronze 901.59.658	Weathered bronze 901.59.660	Weathered bronze 901.59.663

FLUSH PULLS.

A simple and minimal flush pull. Ideal for timber sliding doors.



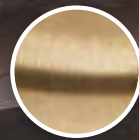
SN



VGM



VBS



VBB



VWB



1. Square flush pull
Weathered bronze
500 x 100 mm
901.04.691

2. Square flush pull
Brushed brass
400 x 75 mm
901.04.685

3. Square flush pull
PVD Black satin
200 x 45 mm
901.04.673

4. Oval flush pull
Satin nickel
200 x 40 mm
901.04.586

5. Edge pull
PVD Black satin
112 x 25 mm
901.04.703

6. Oval flush pull
Satin nickel
200 x 65 mm
901.04.626

PULL HANDLES.



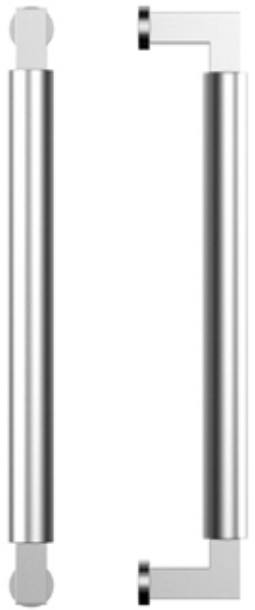
xxx



SN

VBS

VBB



1. Lanex Pull handle

Satin nickel

400 x 78mm (L x D) 901.04.726
 600 x 78mm (L x D) 901.04.736
 800 x 78mm (L x D) 901.04.746
 1000 x 78mm (L x D) 901.04.756

Black satin

400 x 78mm (L x D) 901.04.723
 600 x 78mm (L x D) 901.04.733
 800 x 78mm (L x D) 901.04.743
 1000 x 78mm (L x D) 901.04.753

Brushed brass

400 x 78mm (L x D) 901.04.725
 600 x 78mm (L x D) 901.04.735
 800 x 78mm (L x D) 901.04.745
 1000 x 78mm (L x D) 901.04.755



2. Kamen Pull handle

Satin nickel

400 x 102.5mm (L x D) 901.04.766
 600 x 102.5mm (L x D) 901.04.776
 800 x 102.5mm (L x D) 901.04.786

Black satin

400 x 102.5mm (L x D) 901.04.763
 600 x 102.5mm (L x D) 901.04.773
 800 x 102.5mm (L x D) 901.04.783

Brushed brass

400 x 102.5mm (L x D) 901.04.765
 600 x 102.5mm (L x D) 901.04.775
 800 x 102.5mm (L x D) 901.04.785



4. Startec Pull handle

Satin Stainless steel

480 x 60mm (L x D) 903.00.070
 630 x 60mm (L x D) 903.00.074
 1030 x 60mm (L x D) 903.00.078

STARTEC LEVER RANGE

Torquay

Satin stainless steel	
Dummy	911.83.773
Handle only	904.21.320
Passage set	911.83.771
Privacy set	911.83.772

Polished stainless steel	
Dummy	911.83.758
Handle only	904.21.321
Passage set	911.83.754
Privacy set	911.83.756

Satin brass	
Dummy	911.83.709
Handle only	904.21.325
Passage set	911.83.707
Privacy set	911.83.708

Graphite black	
Dummy	911.83.759
Handle only	904.21.323
Passage set	911.83.755
Privacy set	911.83.757

Coogee

Satin stainless steel	
Dummy	911.83.793
Handle only	904.21.340
Passage set	911.83.791
Privacy set	911.83.792

Polished stainless steel	
Dummy	911.84.408
Handle only	904.21.341
Passage set	911.84.406
Privacy set	911.84.407

Satin brass	
Dummy	911.84.468
Handle only	904.21.345
Passage set	911.84.466
Privacy set	911.84.467

Graphite black	
Dummy	911.84.438
Handle only	904.21.343
Passage set	911.84.436
Privacy set	911.84.437

Glenelg

Satin stainless steel	
Dummy	911.83.753
Handle only	904.21.290
Passage set	911.83.751
Privacy set	911.83.752

Polished stainless steel	
Dummy	911.83.739
Handle only	904.21.291
Passage set	911.83.735
Privacy set	911.83.737

Satin brass	
Dummy	911.83.706
Handle only	904.21.295
Passage set	911.83.704
Privacy set	911.83.705

Graphite black	
Dummy	911.83.740
Handle only	904.21.293
Passage set	911.83.736
Privacy set	911.83.738

Bronte

Satin stainless steel	
Dummy	911.83.763
Handle only	904.21.310
Passage set	911.83.761
Privacy set	911.83.762

Polished stainless steel	
Dummy	911.84.417
Handle only	904.21.311
Passage set	911.84.415
Privacy set	911.84.416

Satin brass	
Dummy	911.84.477
Handle only	904.21.315
Passage set	911.84.475
Privacy set	911.84.476

Graphite black	
Dummy	911.84.447
Handle only	904.21.313
Passage set	911.84.445
Privacy set	911.84.446

Noosa

Satin stainless steel	
Dummy	911.83.803
Handle only	904.21.350
Passage set	911.83.801
Privacy set	911.83.802

Polished stainless steel	
Dummy	911.84.414
Handle only	904.21.351
Passage set	911.84.412
Privacy set	911.84.413

Satin brass	
Dummy	911.84.474
Handle only	904.21.355
Passage set	911.84.472
Privacy set	911.84.473

Graphite black	
Dummy	911.84.444
Handle only	904.21.353
Passage set	911.84.442
Privacy set	911.84.443

Seacliff

Satin stainless steel	
Dummy	911.83.783
Handle only	904.21.330
Passage set	911.83.781
Privacy set	911.83.782

Polished stainless steel	
Dummy	911.83.768
Handle only	904.21.331
Passage set	911.83.764
Privacy set	911.83.766

Satin brass	
Dummy	911.83.716
Handle only	904.21.335
Passage set	911.83.714
Privacy set	911.83.715

Graphite black	
Dummy	911.83.769
Handle only	904.21.333
Passage set	911.83.765
Privacy set	911.83.767

Prevelly hollow

Satin stainless steel	
Dummy	911.83.743
Handle only	904.21.280
Passage set	911.83.741
Privacy set	911.83.742

Polished stainless steel	
Dummy	911.84.405
Handle only	904.21.281
Passage set	911.84.403
Privacy set	911.84.404

Satin brass	
Dummy	911.84.465
Handle only	904.21.285
Passage set	911.84.463
Privacy set	911.84.464

Graphite black	
Dummy	911.84.435
Handle only	904.21.283
Passage set	911.84.433
privacy set	911.84.434

Prevelly solid

Satin stainless steel	
Dummy	911.83.748
Handle only	904.21.300
Passage set	911.83.746
Privacy set	911.83.747

Polished stainless steel	
Dummy	911.84.411
Handle only	904.21.301
Passage set	911.84.409
Privacy set	911.84.410

Satin brass	
Dummy	911.84.471
Handle only	904.21.305
Passage set	911.84.469
Privacy set	911.84.470

Graphite black	
Dummy	911.84.441
Handle only	904.21.303
Passage set	911.84.439
privacy set	911.84.440

DESIGNER DOORWARE LEVER RANGE

Gabriella		Lanex		Catalina		Kamen Flinders		Quad		Lodden	
Satin nickel		Satin nickel		Satin nickel		Satin nickel		Satin nickel		Satin nickel	
Dummy	900.30.436	Dummy	900.30.426	Dummy	900.30.416	Dummy	900.30.446	Dummy	900.30.456	Dummy	900.30.476
Handle only	900.22.996	Handle only	900.22.986	Handle only	900.22.976	Handle only	900.23.006	Handle only	900.23.016	Handle only	900.23.056
Passage set	911.86.020	Passage set	911.86.010	Passage set	911.86.000	Passage set	911.86.030	Passage set	911.86.040	Passage set	911.86.060
Privacy set	911.86.025	Privacy set	911.86.015	Privacy set	911.86.005	Privacy set	911.86.035	Privacy set	911.86.045	Privacy set	911.86.065
Gunmetal		Gunmetal		Gunmetal		Gunmetal		Gunmetal		Gunmetal	
Dummy	900.30.438	Dummy	900.30.428	Dummy	900.30.418	Dummy	900.30.448	Dummy	900.30.458	Dummy	900.30.478
Handle only	900.22.998	Handle only	900.22.988	Handle only	900.22.978	Handle only	900.23.008	Handle only	900.23.018	Handle only	900.23.058
Passage set	911.86.023	Passage set	911.86.013	Passage set	911.86.003	Passage set	911.86.033	Passage set	911.86.043	Passage set	911.86.063
Privacy set	911.86.028	Privacy set	911.86.018	Privacy set	911.86.008	Privacy set	911.86.038	Privacy set	911.86.048	Privacy set	911.86.068
Black satin		Black satin		Black satin		Black satin		Black satin		Black satin	
Dummy	900.30.433	Dummy	900.30.423	Dummy	900.30.413	Dummy	900.30.443	Dummy	900.30.453	Dummy	900.30.473
Handle only	900.22.993	Handle only	900.22.983	Handle only	900.22.973	Handle only	900.23.003	Handle only	900.23.013	Handle only	900.23.053
Passage set	911.86.021	Passage set	911.86.011	Passage set	911.86.001	Passage set	911.86.031	Passage set	911.86.041	Passage set	911.86.061
Privacy set	911.86.026	Privacy set	911.86.016	Privacy set	911.86.006	Privacy set	911.86.036	Privacy set	911.86.046	Privacy set	911.86.066
Brushed brass		Brushed brass		Brushed brass		Brushed brass		Brushed brass		Brushed brass	
Dummy	900.30.435	Dummy	900.30.425	Dummy	900.30.415	Dummy	900.30.445	Dummy	900.30.455	Dummy	900.30.475
Handle only	900.22.995	Handle only	900.22.985	Handle only	900.22.975	Handle only	900.23.005	Handle only	900.23.015	Handle only	900.23.055
Passage set	911.86.022	Passage set	911.86.012	Passage set	911.86.002	Passage set	911.86.032	Passage set	911.86.042	Passage set	911.86.062
Privacy set	911.86.027	Privacy set	911.86.017	Privacy set	911.86.007	Privacy set	911.86.037	Privacy set	911.86.047	Privacy set	911.86.067
Weathered bronze		Weathered bronze		Weathered bronze		Weathered bronze		Weathered bronze		Weathered bronze	
Dummy	900.30.431	Dummy	900.30.421	Dummy	900.30.411	Dummy	900.30.441	Dummy	900.30.451	Dummy	900.30.471
Handle only	900.22.991	Handle only	900.22.981	Handle only	900.22.971	Handle only	900.23.001	Handle only	900.23.011	Handle only	900.23.051
Passage set	911.86.024	Passage set	911.86.014	Passage set	911.86.004	Passage set	911.86.034	Passage set	911.86.044	Passage set	911.86.064
Privacy set	911.86.029	Privacy set	911.86.019	Privacy set	911.86.009	Privacy set	911.86.039	Privacy set	911.86.049	Privacy set	911.86.069

DESIGNER DOORWARE FLUSH HANDLE RANGE

Square flush pull 500 x 100 mm (L x W)	Square flush pull 400 x 75 mm (L x W)	Square flush pull 200 x 45 mm (L x W)	Oval flush pull 200 x 40 mm (L x W)	Oval flush pull 200 x 65 mm (L x W)	Edge pull 112 x 25 mm (L x W)
Satin nickel	Satin nickel	Satin nickel	Satin nickel	Satin nickel	Satin nickel
901.04.696	901.04.686	901.04.676	901.04.586	901.04.626	901.04.706
Gunmetal	Gunmetal	Gunmetal	Gunmetal	Gunmetal	Gunmetal
901.04.698	901.04.688	901.04.678	901.04.588	901.04.628	901.04.708
Black satin	Black satin	Black satin	Black satin	Black satin	Black satin
901.04.693	901.04.683	901.04.673	901.04.583	901.04.623	901.04.703
Brushed brass	Brushed brass	Brushed brass	Brushed brass	Brushed brass	Brushed brass
901.04.695	901.04.685	901.04.675	901.04.585	901.04.625	901.04.705
Weathered bronze	Weathered bronze	Weathered bronze	Weathered bronze	Weathered bronze	Weathered bronze
901.04.691	901.04.681	901.04.671	901.04.581	901.04.621	901.04.701



HÄFELE

732.37.103 - LEVER HANDLES DESIGNER SERIES COLLECTION - 08.2023

Häfele Australia Pty. Ltd. | 8 Monterey Road | Dandenong | Victoria 3175
Phone: 1300 659 728 | Fax: (03) 9212 2001 | Email: info@hafele.com.au | www.hafele.com.au

Häfele New Zealand Ltd. | 16 Accent Drive | East Tamaki | Auckland 2013
Phone: 0800 442 335 | Email: info@hafele.co.nz | www.hafele.co.nz

HÄFELE LOCATIONS:

Australia | MELBOURNE | SYDNEY | NEWCASTLE | BRISBANE | ADELAIDE | LAUNCESTON | HOBART | PERTH
New Zealand | AUCKLAND | WELLINGTON | CHRISTCHURCH

